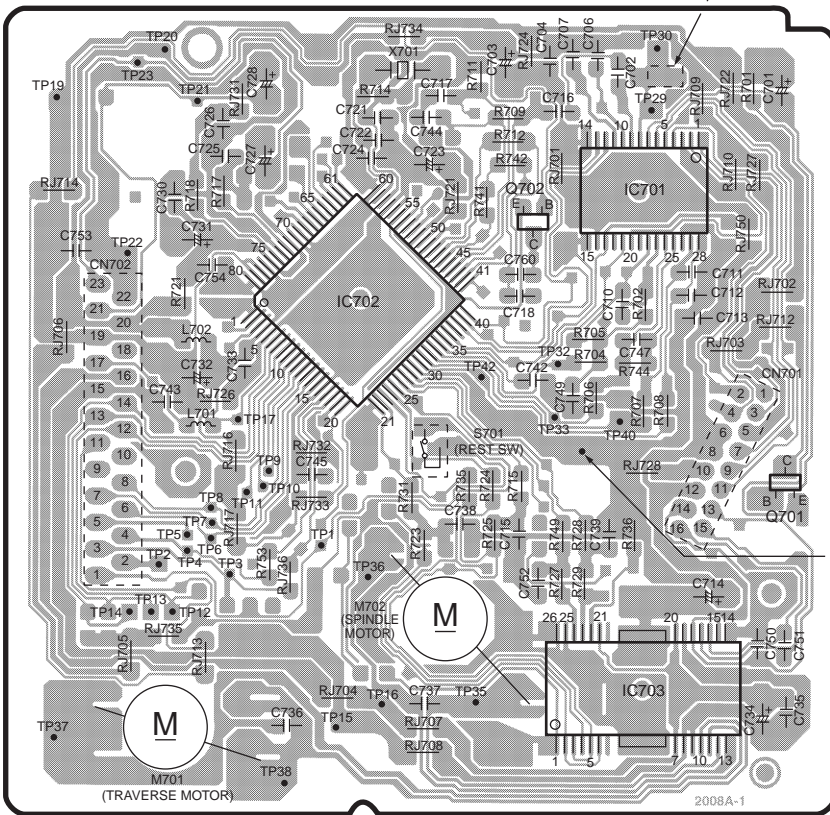
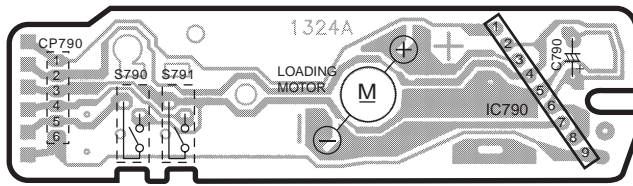


A CD SERVO P.C.B.



(REP2772A-N)

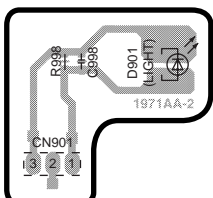
B LOADING MOTOR P.C.B.



(REP1960A)

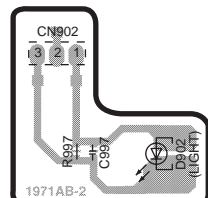
[Keeping to the rule of unit supply, we do not supply single parts.]

E LED(L) P.C.B.



(REP2685A-S)

F LED(R) P.C.B.

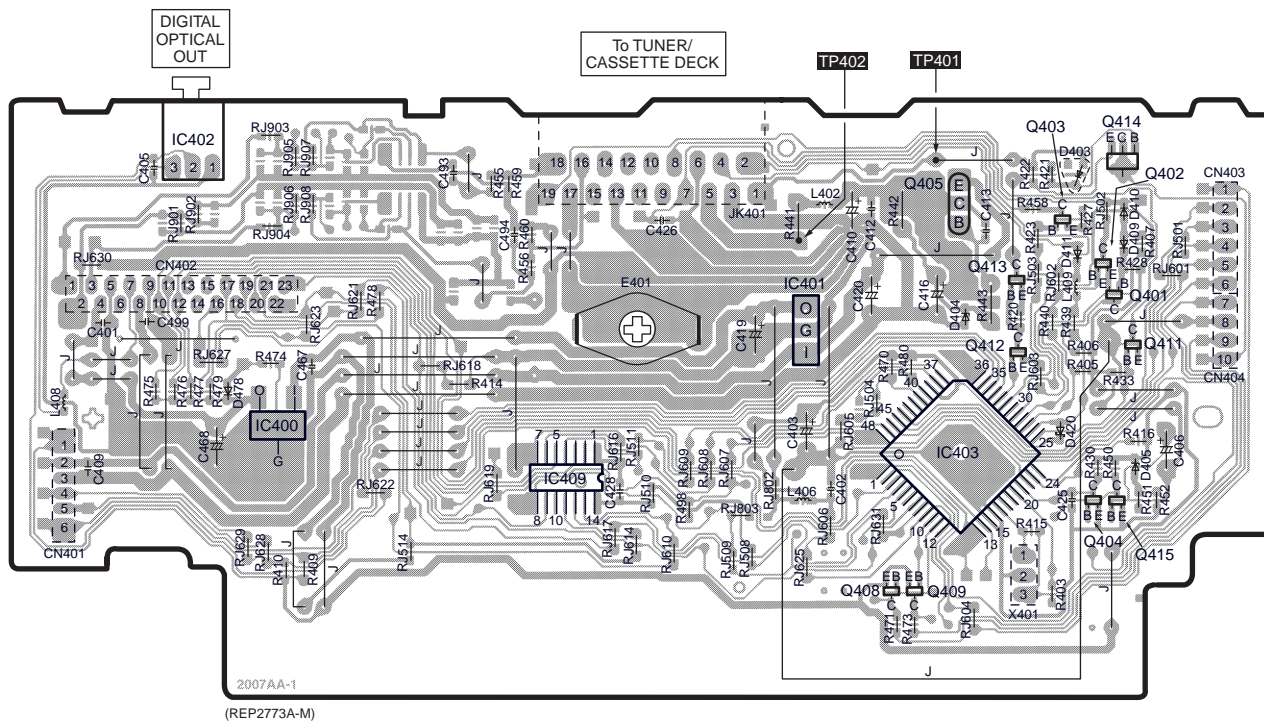


(REP2685A-S)

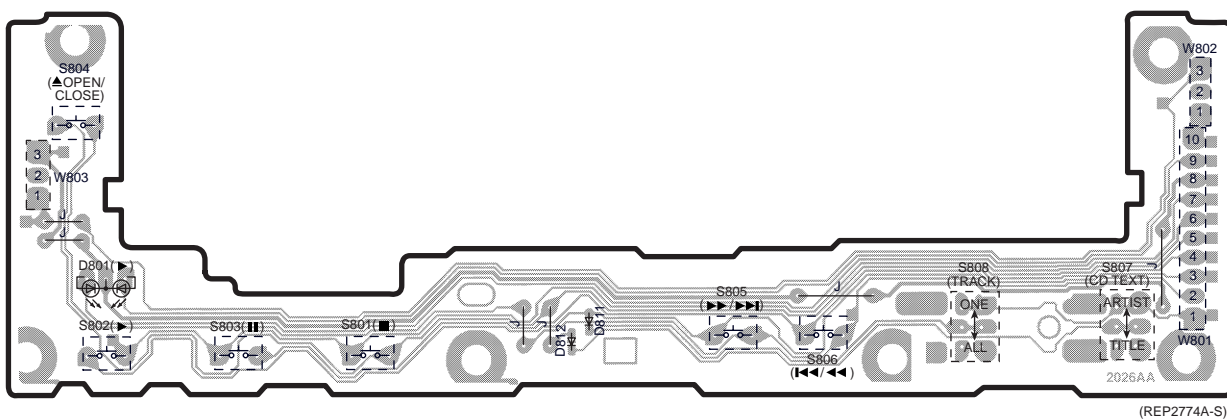
ELECTRICAL PARTS LOCATION

Ref. No.	Lo. No.	Ref. No.	Lo. No.
A CD SERVO P.C.B.			
IC701	2D	R753	4B
IC702	3B	RJ701	2C
IC703	4D	RJ702	2D
Q701	3D	RJ703	3D
Q702	2C	RJ704	4B
L701	3B	RJ705	4A
L702	3B	RJ706	3A
X701	2C	RJ707	4C
S701	3C	RJ708	5C
CN701	3D	RJ709	2D
CN702	3A	RJ710	2D
M701	4A	RJ712	3D
M702	4C	RJ713	4B
TJ701	2D	RJ714	2A
TJ702	3C	RJ716	3B
TP1	4B	RJ717	4B
TP2	4A	RJ721	2C
TP3	4B	RJ722	2D
TP4	4B	RJ724	1C
TP5	4B	RJ726	3B
TP6	4B	RJ727	2D
TP7	4B	RJ728	3D
TP8	3B	RJ731	2B
TP9	3B	RJ732	3B
TP10	3B	RJ733	3B
TP11	3B	RJ734	1C
TP12	4B	RJ735	4A
TP13	4A	RJ736	4B
TP14	4A	RJ750	2D
TP15	4B	C701	2D
TP16	4B	C702	2D
TP17	3B	C703	1C
TP19	2A	C704	1C
TP20	1A	C706	1C
TP21	2B	C707	1C
TP22	2A	C710	3D
TP23	1A	C711	2D
TP29	2D	C712	3D
TP30	1D	C713	3D
TP32	3C	C714	4D
TP33	3C	C715	4C
TP35	4C	C716	2C
TP36	4B	C717	2C
TP37	5A	C718	3C
TP38	5B	C721	2B
TP40	3D	C722	2B
TP42	3C	C723	2C
R701	2D	C724	2B
R702	3D	C725	2B
R704	3C	C726	2B
R705	3C	C727	2B
R706	3C	C728	2B
R707	3D	C730	2B
R708	3D	C731	2B
R709	2C	C732	3B
R711	2C	C733	3B
R712	2C	C734	4D
R714	2B	C735	4D
R715	3C	C736	4B
R717	2B	C737	4C
R718	2B	C738	4C
R721	3B	C739	4C
R723	4C	C742	3C
R724	3C	C743	3A
R725	4C	C744	2C
R727	4C	C745	3B
R728	4C	C747	3D
R729	4C	C749	3C
R731	3C	C750	4D
R735	3C	C751	4D
R736	4D	C752	4C
R741	2C	C753	2A
R742	2C	C754	2B
R744	3D	C760	2C
R749	4C		
B LOADING MOTOR P.C.B.			
IC790	6D	CP790	6B
S790	6B	C790	6D
S791	6B		
E LED(L) P.C.B.			
D901	7B	R998	7A
CN901	8A	C998	7B
F LED(R) P.C.B.			
D902	8D	R997	8C
CN902	7C	C997	8C

C MAIN P.C.B.



D OPERATION P.C.B.



ELECTRICAL PARTS LOCATION

Ref. No.	Lo. No.	Ref. No.	Lo. No.	Ref. No.	Lo. No.	Ref. No.	Lo. No.	Ref. No.	Lo. No.	Ref. No.	Lo. No.	Ref. No.	Lo. No.	Ref. No.	Lo. No.
C MAIN P.C.B.															
IC400	3B	D404	2E	R403	4E	R440	2E	R477	3B	RJ605	3E	RJ630	2A	C410	2E
IC401	2D	D405	3F	R405	3F	R441	2D	R478	2B	RJ606	3D	RJ631	3E	C412	2E
IC402	2B	D409	2F	R406	2F	R442	2E	R479	3B	RJ607	3D	RJ802	3D	C413	2E
IC403	3E	D410	2F	R407	2F	R443	2E	R480	3E	RJ608	3D	RJ803	3D	C416	2E
IC409	3C	D411	2F	R409	3B	R450	3F	R498	3D	RJ609	3D	RJ901	2B	C419	2D
Q401	2F	D420	3F	R410	3B	R451	3F	RJ501	2F	RJ610	3D	RJ902	2B	C420	2E
Q402	2F	D478	3B	R414	3C	R452	3F	RJ502	2F	RJ614	3D	RJ903	1B	C425	3F
Q403	2F	L402	2D	R415	3E	R455	2C	RJ503	2E	RJ616	3D	RJ904	2B	C426	2D
Q404	3F	L406	3D	R416	3F	R456	2C	RJ504	3E	RJ617	3D	RJ905	2B	C428	3D
Q405	2E	L408	3A	R420	2E	R458	2E	RJ508	3D	RJ618	3C	RJ906	2B	C467	3B
Q408	4E	L409	2F	R421	2E	R459	2C	RJ509	3D	RJ619	3C	RJ907	2B	C468	3B
Q409	4E	X401	3E	R422	2E	R460	2C	RJ510	3D	RJ621	2B	RJ908	2B	C493	2C
Q411	2F	CN401	3A	R423	2E	R470	3E	RJ511	3D	RJ622	3B	C401	2A	C494	2C
Q412	2E	CN402	2B	R427	2F	R471	4E	RJ514	3C	RJ623	2B	C402	3D	C499	2A
Q413	2E	CN403	2F	R428	2F	R473	4E	RJ601	2F	RJ625	3D	C403	3D		
Q414	2F	CN404	2F	R430	3F	R474	3B	RJ602	2F	RJ627	2B	C405	2A		
Q415	3F	JK401	2D	R433	3F	R475	3A	RJ603	3E	RJ628	3B	C406	3F		
D403	2F	E401	2D	R439	2F	R476	3B	RJ604	4E	RJ629	3B	C409	3A		
D OPERATION P.C.B.															
D801	6A	D812	6C	S802	6A	S804	5A	S806	6E	S808	6E	W802	5F		
D811	6C	S801	6B	S803	6B	S805	6D	S807	6F	W801	6F	W803	5A		